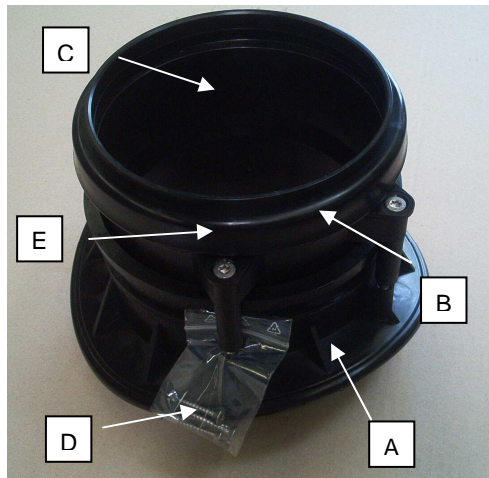


Assembly instruction for corrugated pipe saddle



The assembly kit includes:

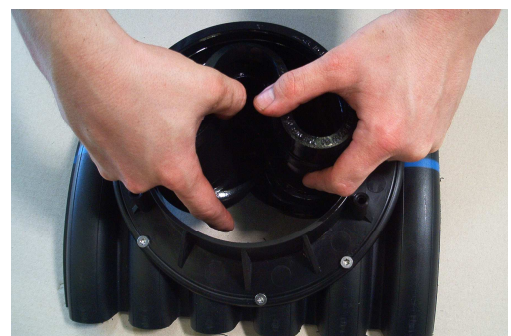
- A 1 x Plastic part
- B 1 x Rubber part
- C 1 x Inner-pipe (pipe-end)
- D 4 x TORX-counter-sunk-bolt M5x30mm
- E 4 x TORX-counter-sunk-bolt M6x90mm

1. Drill a hole into the corrugated pipe.
Dimension: $d = 178.0\text{mm} (\pm 1.0\text{mm})$
vertically to the pipe axle.



2. Fasten the plastic part on top of the pipe with the TORX-counter-sunk-bolt M5x30mm.

3. Put in the rubber-part. Crease it at the marked arrow and lift it until the rubber-part is closed fit at the inner-side of the pipe and the rubber edge is above the edge of the plastic part.





4. Attention! The arrow of the rubber part must point diagonal to the pipe axle.

5. Lubricate the inner part of the rubber-part and the inner pipe-end.



6. Fix the pipe-end so that four fixing points lie on top of each other. Push the plastic-part until end stop.

7. Fix plastic-part and pipe-end with four TORX-counter-sunk-bolt M6x90mm.

Attention: Tighten the bolts crosswise.

